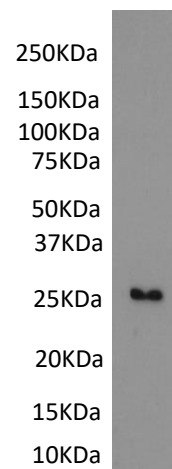


## Product Datasheet

### Goat anti-CRP antibody

#### #SB-AAG

<b>Immunogen</b>	a 15-aa long N-terminal peptide of human CRP
<b>Quantity</b>	0.2 mg in 0.5mg/ml
<b>Purification</b>	Ammonium sulphate precipitation of serum followed by antigen affinity purification
<b>Buffer</b>	Tris saline, PH 7.3, with 0.5% BSA and 0.02% sodium azide
<b>Storage and handling</b>	Store at 4°C for short durations. Store at -20°C for longer periods (> 1 month). Minimize freeze thaw cycles
<b>Applications tested</b>	<p><b>Peptide ELISA:</b> antibody detection at 1:128000 dilution</p> <p><b>Sandwich ELISA :</b> Capture antibody</p> <p><b>Western blotting:</b> Approx 25 kDa band observed in purified CRP protein, human plasma and serum. Recommended concentration: 0.03-0.5 µg/ml</p>
<b>Application notes</b>	Please optimize dilutions for your particular assay conditions. Starting test dilution: 1 µg/ml for ELISA and WB



SB-AAG anti-CRP (1 µg/ml) staining of purified human CRP (5 µg protein in PBS). Primary incubation was 1 hour. Detected by chemiluminescence