

Product Datasheet

Goat anti-human IgM antibody

#SB-50-3002

Immunogen a 42-aa long peptide from the heavy chain of human Immunoglobulin M

Quantity 0.5mg in 0.5ml

Purification Ammonium sulphate precipitation of serum followed by antigen affinity purification

Conjugate None

Buffer 10 mM Tris, PH 8.2, with 150 mM NaCl, 10 mg/ml BSA and 0.1% sodium azide

Storage and handling Store at 4°C for long time. Do not freeze

Applications tested

Protein ELISA: Human serum IgM detection at 1: 200 dilution

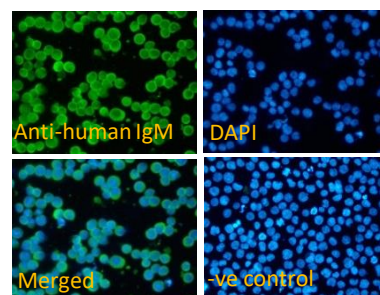
Peptide ELISA : Antibody detection at 1:128000 dilution

Immunofluorescence: Immunofluorescence tested on Daudi cells. Recommended dilution: 1:50 to 1:100

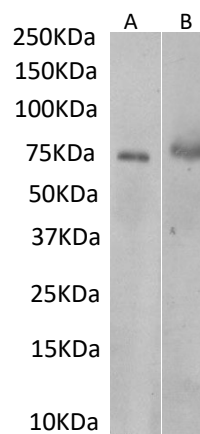
Western blotting : Approx 75 kDa band observed human plasma and serum.

Recommended concentration: 0.1-1µg/ml

Notes Please optimize dilutions for your particular assay conditions. Starting test dilution: 1:500 for indirect immunofluorescence



SB-50-3002 Immunofluorescence analysis of paraformaldehyde fixed Daudi cells, permeabilized with 0.15% Triton. Primary incubation 1hr (10µg/ml) followed by Alexa Fluor 488 secondary antibody (1µg/ml), showing membrane staining. The nuclear stain is DAPI (blue). Negative control: Unimmunized goat IgG (10µg/ml) followed by Alexa Fluor 488 secondary antibody (1µg/ml).



SB-50-3002 Anti-human IgM staining of human plasma (A, 1 µg/ml) and human serum (B, 0.1 µg/ml) under non-reduced condition. Primary incubation was 1 hour. Detected by chemiluminescence