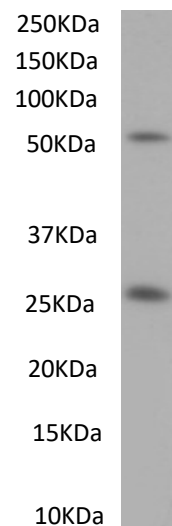


## Product Datasheet

### Goat anti-mouse IgG antibody

#SB-52-3001

<b>Immunogen</b>	Purified mouse whole IgG
<b>Quantity</b>	0..5mg in 0.5ml
<b>Purification</b>	Ammonium sulphate precipitation of serum followed by antigen affinity purification
<b>Conjugate</b>	Unconjugated
<b>Buffer</b>	Phosphate buffer saline, PH 7.2, with 0.02% sodium azide as preservative
<b>Storage and handling</b>	Store at 4°C for short durations. Store at -20°C for longer periods (> 1 month). Minimize freeze thaw cycles
<b>Applications tested</b>	<p><b>Protein ELISA:</b> antibody detection at 1:16000 dilution</p> <p><b>Western blotting:</b> Approx 50kDa and 25 kDa (reduced) band observed in mouse IgG. Recommended dilution: 1:3000 to 1:10000</p>
<b>Application notes</b>	Please optimize dilutions for your particular assay conditions. Starting test dilution: 0.5µg/ml for ELISA and WB



*SB-52-3001* Anti-mouse IgG (1:3000) staining of mouse IgG reduced (0.5 µg protein per lane). Primary incubation was 1 hour. Detected by chemiluminescence