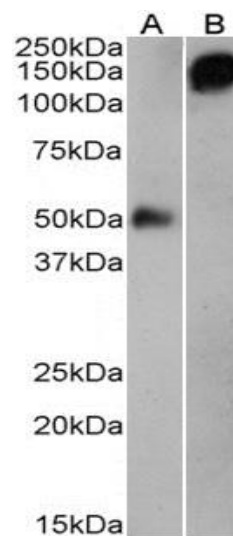


## Product Datasheet

### Goat anti human-IgG antibody #SB-50-3001

<b>Immunogen</b>	Purified human whole IgG
<b>Quantity</b>	0.5mg in 1 ml
<b>Purification</b>	Ammonium sulphate precipitation of serum followed by antigen affinity purification
<b>Conjugate</b>	Unconjugated
<b>Buffer</b>	Phosphate buffer saline, pH 7.2, with 0.02% Sodium azide as preservative
<b>Storage and handling</b>	Store at 4°C for short durations. Store at -20°C for longer periods (> 1 month). Minimize freeze thaw cycles
<b>Applications tested</b>	ELISA: Antibody detection limit dilution 1:128000 Western blotting : Approx 50kDa (reduced) and 150kDa (nonreduced) band observed in human plasma. Recommended dilution: 1:3000 – 1:1000
<b>Application notes</b>	Please optimize dilutions for your particular assay conditions.



**SB-50-3001** Anti-human IgG (1:3000) staining of human plasma either reduced (A) or nonreduced (B) (0.1µg protein per lane). Primary incubation was 1 hour. Detected by chemiluminescence