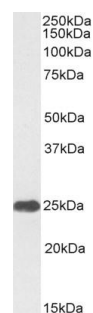


Product Datasheet

Goat anti-human CRP -HRP conjugate #SB-20-3004H

Immunogen	Purified human C reactive protein
Quantity	200µl
Purification	Ammonium sulphate precipitation of serum followed by antigen affinity purification
Buffer	Phosphate buffer saline, PH 7.2, with 0.02% sodium azide as preservative
Storage and handling	Store at 4C for short durations. Store at -20 for longer periods (> 1 month). Minimize freeze thaw cycles
Applications tested	Protein ELISA: antibody detection at 1:128000 dilution Western blotting : ca 25kDa band in Human Liver and Serum lysates
Application notes	Please optimize dilutions for your particular assay conditions. Starting test dilution: 0.5µg/ml for ELISA and WB



SB-20-3004H (0.3µg/ml)
staining of Human Liver lysate
(35µg protein in RIPA buffer).
Primary incubation was 1 hour.
Detected by
chemiluminescence at 3 min
exposure