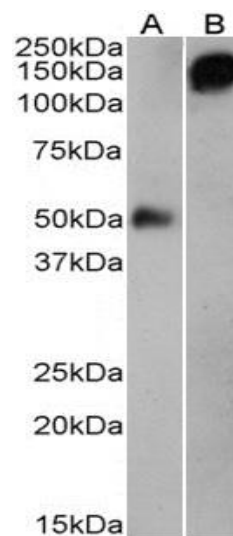


Product Datasheet

Goat anti human-IgG antibody #SB-50-3001

Immunogen	Purified human whole IgG
Quantity	0.2mg in 0.5mg/ml
Purification	Ammonium sulphate precipitation of serum followed by antigen affinity purification
Conjugate	Unconjugated
Buffer	Phosphate buffer saline, pH 7.2, with 0.02% Sodium azide as preservative
Storage and handling	Store at 4°C for short durations. Store at -20°C for longer periods (> 1 month). Minimize freeze thaw cycles
Applications tested	ELISA: Antibody detection limit dilution 1:128000 Western blotting : Approx 50kDa (reduced) and 150kDa (nonreduced) band observed in human plasma. Recommended dilution: 1:3000 – 1:1000
Application notes	Please optimize dilutions for your particular assay conditions.



SB-50-3001 Anti-human IgG (1:3000) staining of human plasma either reduced (A) or nonreduced (B) (0.1µg protein per lane). Primary incubation was 1 hour. Detected by chemiluminescence