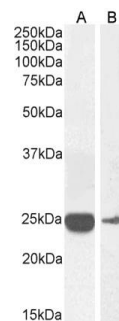


## Product Datasheet

### Goat anti-human CRP antibody

#SB-20-3004

<b>Immunogen</b>	Purified human C reactive protein
<b>Quantity</b>	0.2mg in 1mg/ml
<b>Purification</b>	Ammonium sulphate precipitation of serum followed by antigen affinity purification



<b>Buffer</b>	Phosphate buffer saline, PH 7.2, with 0.02% sodium azide as preservative
<b>Storage and handling</b>	Store at 4C for short durations. Store at -20 for longer periods (> 1 month). Minimize freeze thaw cycles

SB-20-3004 anti-CRP (0.3µg/ml) staining of Human Liver (A) and Human Serum (B) lysates (35µg protein in RIPA buffer). Primary incubation was 1 hour. Detected by chemiluminescence

<b>Applications tested</b>	Protein ELISA: antibody detection at 1:128000 dilution Western blotting : ca 25kDa band in Human Liver and Serum lysates
----------------------------	-----------------------------------------------------------------------------------------------------------------------------

<b>Application notes</b>	Please optimize dilutions for your particular assay conditions. Starting test dilution: 0.5µg/ml for ELISA and WB
--------------------------	-------------------------------------------------------------------------------------------------------------------