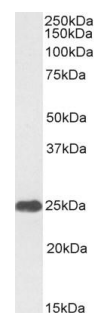


Product Datasheet

Goat anti-human CRP -HRP conjugate #SB-20-3004H

| | |
|-----------------------------|---|
| Immunogen | Purified human C reactive protein |
| Quantity | 0.2mg in 0.5mg/ml |
| Purification | Ammonium sulphate precipitation of serum followed by antigen affinity purification |
| Buffer | Phosphate buffer saline, PH 7.2, with 0.02% sodium azide as preservative |
| Storage and handling | Store at 4C for short durations. Store at -20 for longer periods (> 1 month). Minimize freeze thaw cycles |
| Applications tested | Protein ELISA: antibody detection at 1:128000 dilution Western blotting : ca 25kDa band in Human Liver and Serum lysates |
| Application notes | Please optimize dilutions for your particular assay conditions. Starting test dilution: 0.5µg/ml for ELISA and WB |



SB-20-3004H (0.3µg/ml)
 staining of Human Liver lysate (35µg protein in RIPA buffer). Primary incubation was 1 hour. Detected by chemiluminescence at 3 min exposure